

Compact Fan Heater with Integrated Thermostat PFH-T

NEW

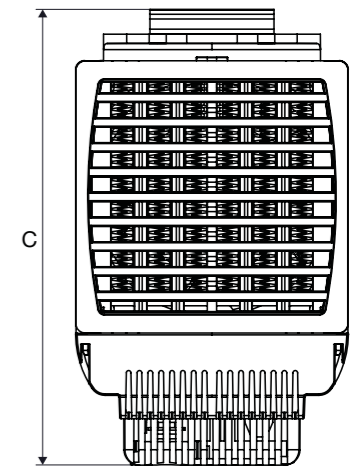
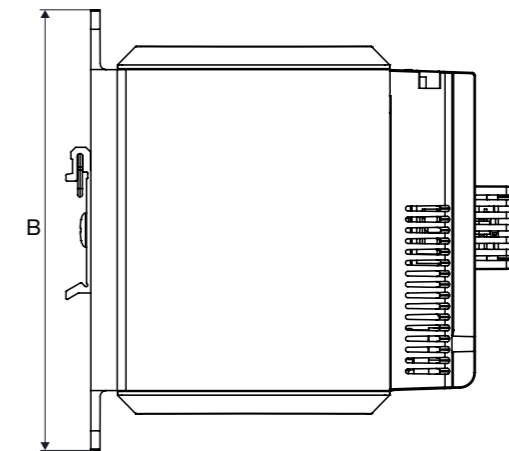
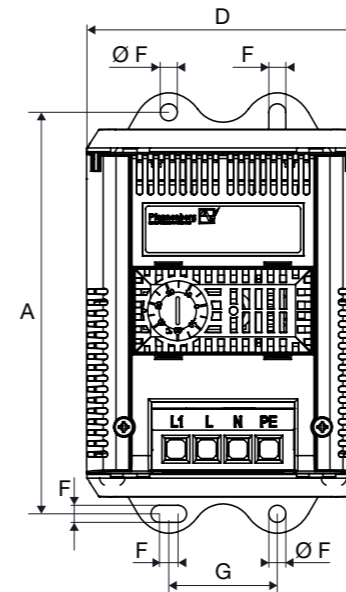
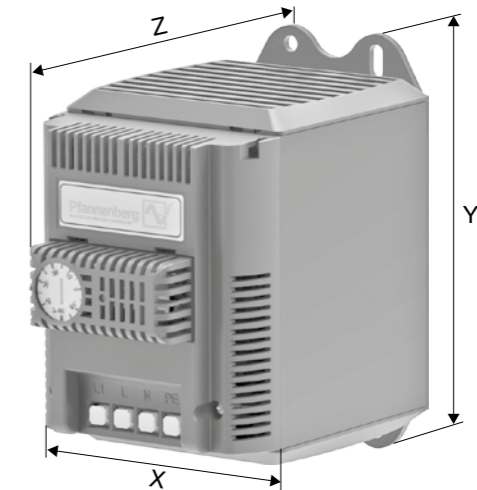


- high power to size ratio ➤ small, compact design
- wide range of heating capacities 200-1200 W in one housing
- fast heating due to PTC technology
- wall or DIN rail mounting
- low surface temperature
- finger guard at inlet and outlet
- integrated adjustable thermostat

Data	PFH-T 200	PFH-T 300	PFH-T 400	PFH-T 500	Unit
Article number	17020710034	17030710034	17040710034	17050710034	
Heating performance (Ta = +10 °C)	200	300	400	500	W
Max. surface temperature	55				°C
Power consumption	215	315	415	545	W
Starting current	9	12	15	20	A
Volumetric air flow	50				m³/h
Pre fuse T	6	6	10	10	A
Data	PFH-T 650	PFH-T 800	PFH-T 1000	PFH-T 1200	Unit
Article number	17065710034	17080710034	17099710034	17099810034	
Heating performance (Ta = +10 °C)	650	800	1000	1200	W
Max. surface temperature	70				°C
Power consumption	665	815	1015	1215	W
Starting current	25	31	25	31	A
Volumetric air flow	50	50	80	80	m³/h
Pre fuse T	10				A
Weight	760				g
System of protection for intended purpose of use	IP 20				
Rated voltage *	230 V AC 50/60 Hz				
Functional range	207 - 258 V AC 50/60 Hz				
Duty cycle	100%				
Temperature setting range	- 20 ... + 40 / - 4 ... + 104				°C / °F
Operating temperature	- 40 ... + 70 / - 40 ... + 158				
Storage temperature	- 40 ... + 70 / - 40 ... + 158				
Installation orientation	as desired, preferably vertical				
Device construction	plastic UL 94V-0, black				
Type of mounting	snap fastening for 35 mm profile bars according to EN 60715 or 4 x M5 screws (not included)				
Protection class	II				
Type of connection	plug terminal connector				
Clamping range of connecting terminal	single wire: 2 x 0.5 - 2.5 mm², fine-stranded: (tinned, with ferrule, with pin cable lug) 2 x 0.5 - 1.5 mm²				

* 115 V version is available on request
Approvals see page 229

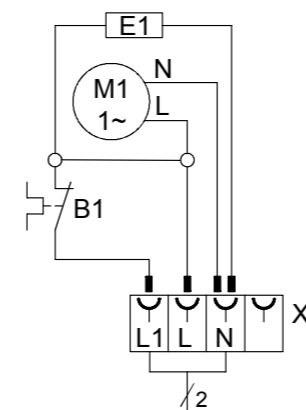
Dimensions	
mm	PFH-T
X	88
Y	142
Z	139
A	129
B	142
C	147
D	88
E	35
F	5.5
G	6



Schematics

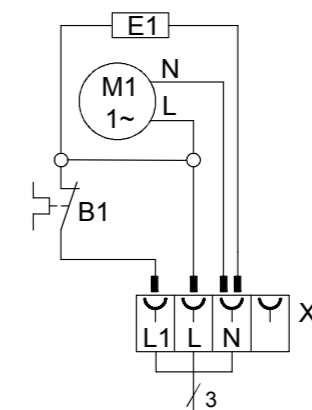
Version 1

with internal thermostat



Version 2

with internal thermostat and external thermostat which control independent to each other



M1: fan
E1: PTC - heating element
X1: connection
B1: thermostat (optional)