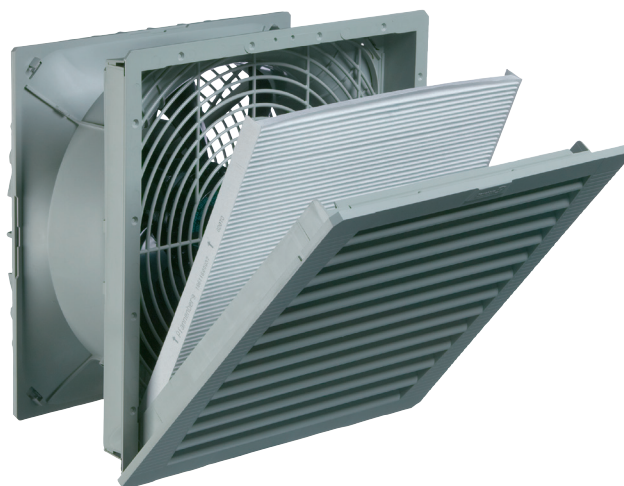


Filterfan

PF 67.000

Exhaust filter

PFA 60.000



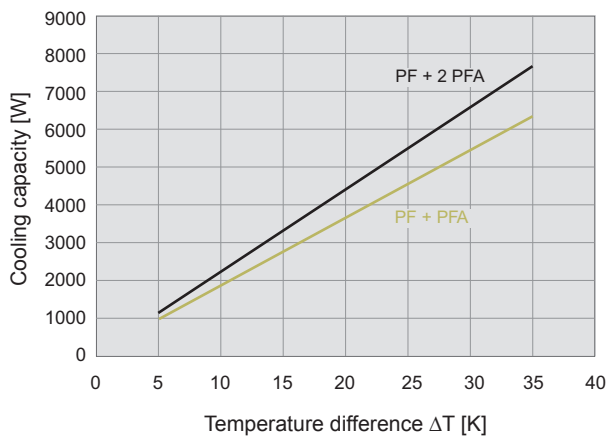
- installation size 6, air flow rate up to 950 m³/h
- three performance classes, cut-out compatible
- system of protection IP 54 and IP 55, NEMA type 12
- UL, cUL approval
- UV-resistance (IP 55 version)
- cut-out compatible with installation size 6 from the 3rd Generation and with cooling unit DTFI 9021 (see page 32)

Data		PF 67.000			Unit
Article number	IP 54	11667022055	11667102055	11667152055	
	IP 55	11667023055	11667103055	11667153055	
		AC 50 Hz / 60 Hz			
Rated voltage ± 10 %		400 / 460 3 ~	230	115	V
Unimpeded airflow	IP 54	845 / 875			m ³ /h
	IP 55	925 / 950			
Airflow rate in combination (PF + PFA 60.000)	IP 54	560 / 625			
	IP 55	570 / 625			
Power consumption		140 / 170	135 / 200	140 / 195	W
Current consumption		0.35 / 0.43	0.59 / 0.88	1.23 / 1.71	A
Noise level (according to EN ISO 3741)	IP 54	66 / 69			dB (A)
	IP 55				
Weight		3.7			kg
Type of connection		spring-type terminal			
Fuse		6			A
System of protection according to EN 60529 / UL 50	IP 54	NEMA type 12 - standard filter			
	IP 55	NEMA type 12 - fluted filter			
Filtration efficiency	IP 54 IP 55	91			%
Filter mat quality class according to EN 779	IP 54 IP 55	G 4			
Duty cycle		100			%
Bearing type		ball bearing			
Service life L ₁₀ (+ 40 °C) ¹		40000			h
Temperature range		- 15 ... + 55 / + 5 ... + 131			°C / °F
Design (housing and protection against accidental contact)	IP 54	made of injection-moulded thermoplastic, self-extinguishing, UL 94 VO			
	IP 55	additional: UV-resistant			
Colour		RAL 7035, different colours available on request			
Accessories		Piece	Article number		Information on page
Exhaust filter PFA 60.000	IP 54	1	11760002055		160
	IP 55	1	11760003055		160
Thermostat		1	17121000000		176/178

¹ fan failure is defined as being when the current and speed deviate or the operating noises are out of the ordinary
Approvals see page 119

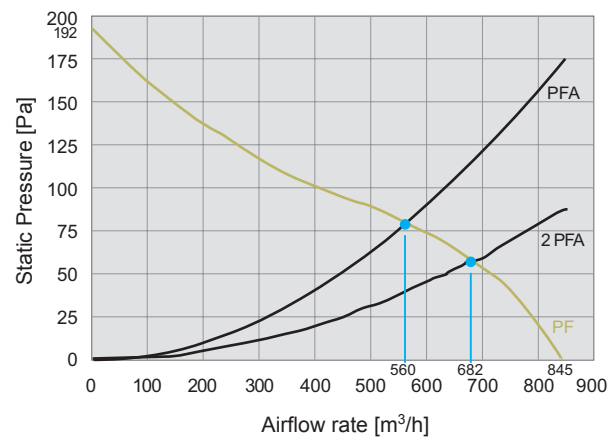
Cooling capacity performance curves

PF 67.000 IP 54

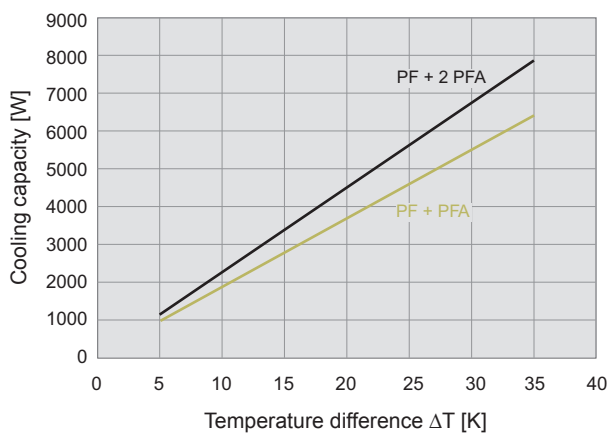


Static pressure performance curves

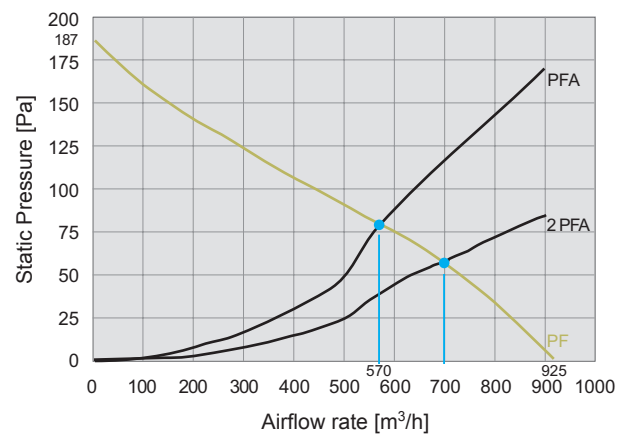
PF 67.000 IP 54



PF 67.000 IP 55



PF 67.000 IP 55



Dimensions

mm	PF 67.000	PFA 60.000
X	320	320
Y	320	320
Z1	7	7
Z2	150	39
A'	291	291
B'	291	291

¹ for material thicknesses up to 2 mm
+ 1 mm for thickness of material > 2 mm ≤ 3 mm

